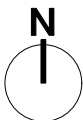
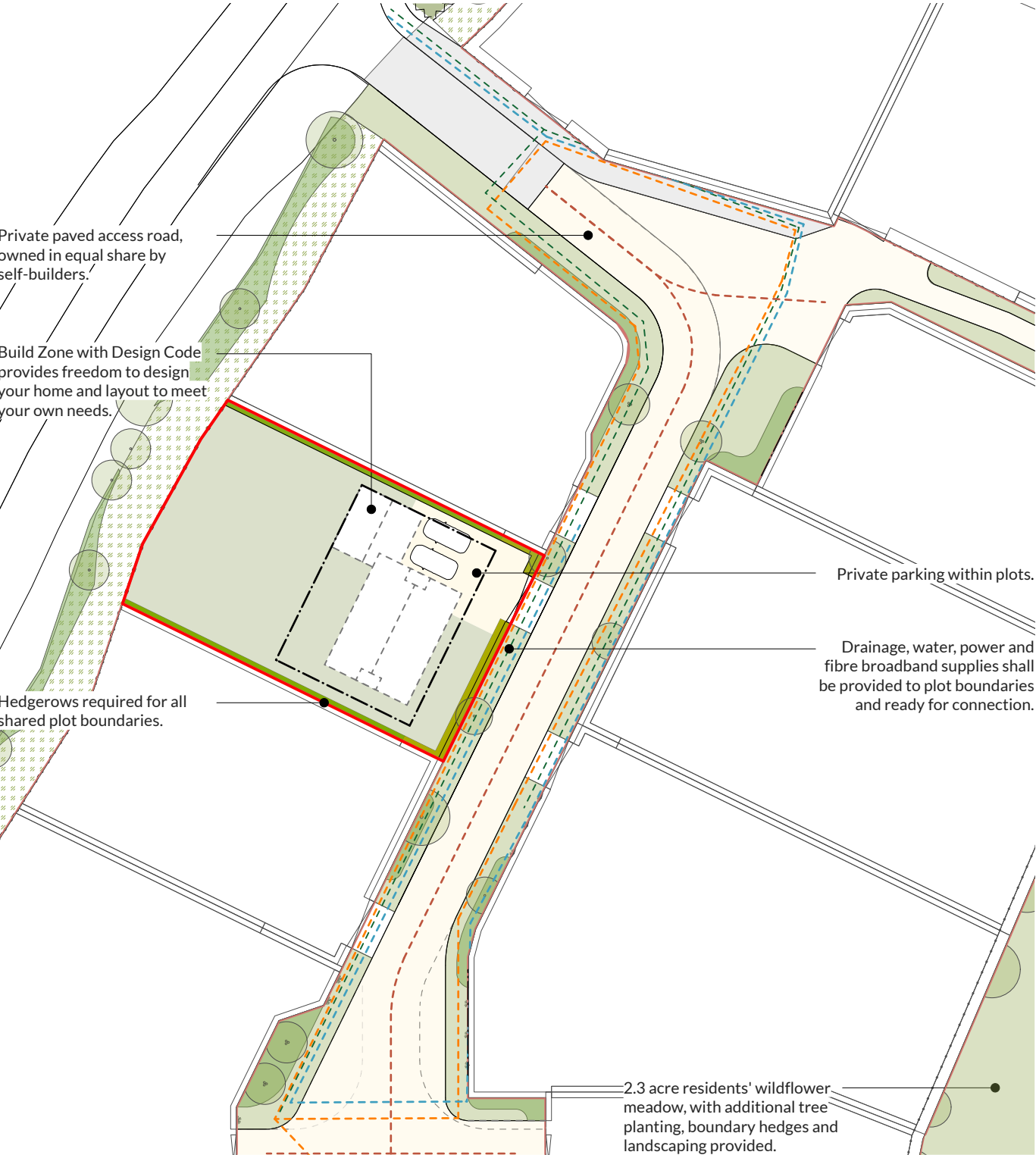
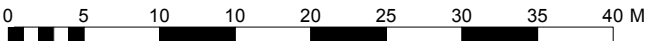


Plot 10		Forest Road, Piddington, NN7 2DA, Scale 1:500 at A4	
Plot Area	0.16 acres (629m ²)	<div>Build Zone</div>	<div>Water Supply</div>
Maximum Internal Floorspace	3229ft ² (300m ²)	<div>Plot Ownership Boundary</div>	<div>Electric Supply</div>
Maximum Storeys	No more than 2 Storey	<div>Example Building Layout</div>	<div>Telecomm Supply</div>
			<div>Drainage Connection</div>



Plot 10
Scale: 1:500



LANDSTRÖM